

راهنمای فارسی

## Creative Nuno micro

بلندگوی بلوتوثی قابل حمل سایز مکعب



تهیه شده در بخش خدمات پس از فروش شرکت شاب

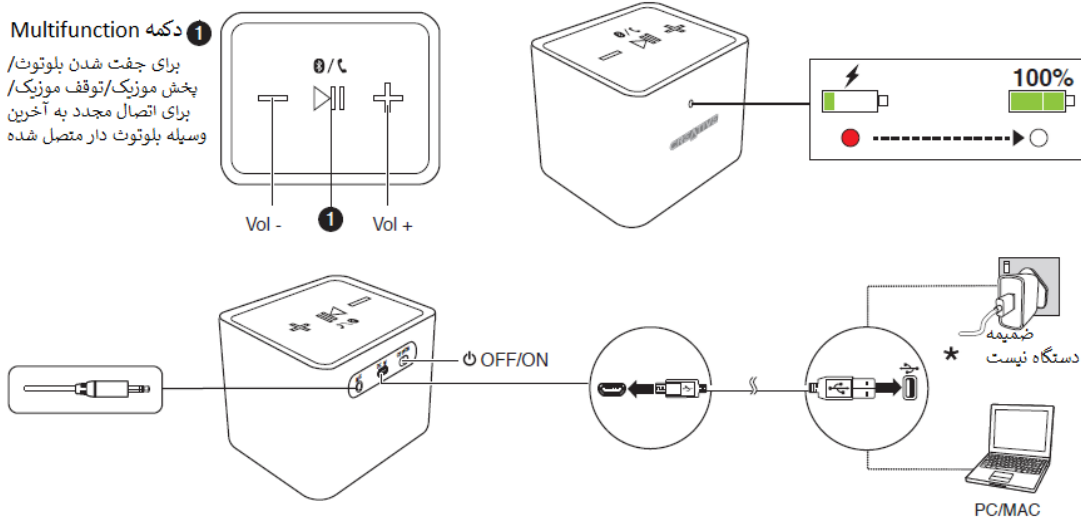
آدرس: تهران، چیدر، میدان ندا، پلاک ۵۸

تلفن: (۱۰ خط) ۲۲۶۸۶۸۱۸

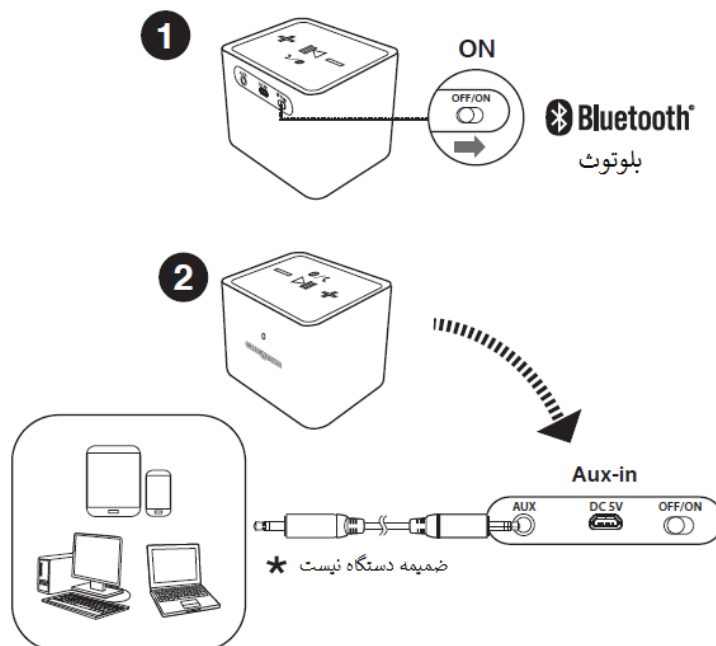
[www.shobtech.com](http://www.shobtech.com)  
[technical@shobtech.com](mailto:technical@shobtech.com)



بررسی کلی



انتخاب منبع

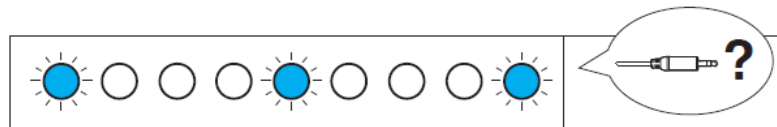


منبع بلوتوث



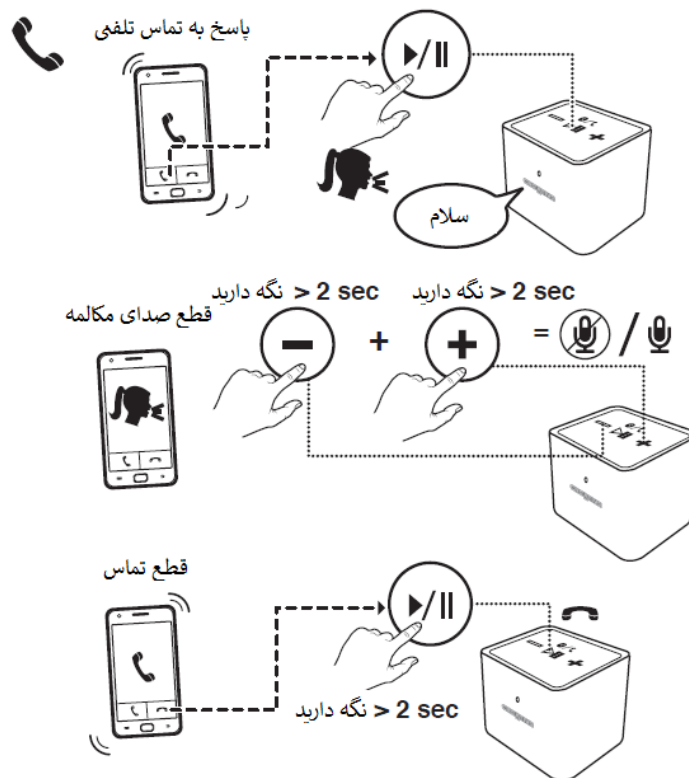
1. Turn the device ON.
2. Press the play/pause button for 3 seconds. The LED bar will show a sequence of blue, red, and blue lights. A smartphone with Bluetooth ON and a Creative NUNO micro adapter is shown nearby.
3. The LED bar shows all blue lights, indicating Bluetooth is active.
4. Press the play/pause button again. The text below says "بخش موزیک / توقف موزیک" (Music section / Stop music).
5. Control buttons:
  - Minus sign (-) = عقب بردن موزیک (Previous music) - Press for >1 sec.
  - Plus sign (+) = جلو بردن موزیک (Next music) - Press for >1 sec.

منبع Aux-in



1. Turn the device ON.
2. Connect the Aux-in cable between the device and a mobile device (موسیله موبایل) or a PC/MAC.

پاسخ به تماس تلفنی



مشخصات دستگاه Nuno micro :

**Bluetooth® Version:** Bluetooth 2.1 + EDR

**Operating Frequency:** 2402 – 2480 MHz

**Operating Range:** Up to 10 meters, measured in open space. Walls and structures may affect range of device.

**Supported Bluetooth Profiles:** A2DP (Wireless Stereo Bluetooth), AVRCP (Bluetooth Remote Control), HFP (Handsfree profile)

**Supported Codec:** SBC

**Lithium Ion Battery:** 3.7V 500mAH (1.85Wh)

**Input:** 5V  $\equiv$  500mA

**Battery Saving Mode:** The speaker automatically powers down when there is no Bluetooth connection or no audio cable attached for more than 10 minutes.

**Operating Temperature Range:** 0°C – 45°C

**Note:** Compliance markings are located on the bottom of this product.

\* Not Included. Sold Separately.